



Corporate Capabilities

Prepared by: Dr. Remo Perini
Date: July 31, 2018

CeleraPro, LLC
1712 Clubhouse Road, Suite 124
Reston, VA 20190

www.celerapro.com
Remo@CeleraPro.com



- CeleraPro at a Glance
- Administrative Support
- Innovation Engineering
- Cyber Security
- Information System Security / NIST Compliance
- Systems Engineering
- Information Technology Support
- Quality Management
- Technology Planning and Road Mapping
- System Integration
- IV&V, Functional, and Performance Testing
- History and Key Leadership

Introduction: CeleraPro at a Glance



Founded: 2015

DUNS #: 080082577 Cage Code: 7J2Q6

NAICS Codes:

- 561110 - Office Administrative Services
- 541330 - Engineering Services
- 541511 - Custom Computer Programming Services
- 541512 - Computer Systems Design Services
- 541513 - Computer Facilities Management Services
- 541519 - Other Computer Related Services
- 541611 - Administrative Management and General Management Consulting
- 541612 - Human Resources Consulting Services
- 541613 - Marketing Consulting Services
- 541614 - Process, Physical Distribution, and Logistics Consulting Services
- 541618 - Other Management Consulting Services
- 541690 - Other Scientific and Technical Consulting Services
- 541990 - All Other Professional, Scientific, and Technical Services
- 561210 - Facilities Support Services
- 561410 - Document Preparation Services

Size: Small Business within all NAICS

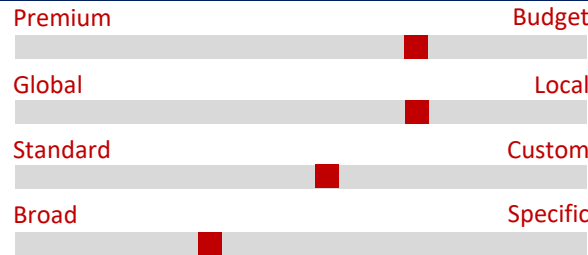
Type: HUBZone



Who We Are

As a Long time veteran of the Government contracting industry, CeleraPro leadership recognized that a company built upon Integrity, Innovation, and Insight could differentiate itself from its competitors. Integrity is the foundation on which CeleraPro is built and the pillars of Insight and Innovation support our approach to achieving business success. Our first objective is to make our customers successful by applying our expertise (Insight) and creativity (Innovation). Our experience allows us to achieve customer goals rapidly (Latin: Celera) in a highly Professional (Pro) and Ethical (integrity) manner. CeleraPro delivers success.

Position in the Market



Our Values

How we do things is just as important as what we do. Our team behaves in accordance with our value system starting with making our customer's needs our own and respecting others in everything we do.

Integrity • Insight • Innovation • Passion

Our Advantage

- CeleraPro has cultivated a work environment that attracts talented people, and trains and retains highly skilled staff.
- Competitive advantages include low rates, talented staff with customer insight, and technology expertise. Our experience allows us to rapidly ramp up to achieve high performance quickly, which translates to superior customer value
- At CeleraPro, we love brining innovation to our customers and facilitating change. We see solutions that others do not. We embrace quality and maintain high standards.

Where

CeleraPro is located at 1712 Clubhouse Road, Suite 124, Reston VA 20190

Key Leadership:



Dr. Remo Perini
President and Chief Innovation Officer
MBA, MSEE, PMP, Ph.D



<https://www.linkedin.com/in/remoperini/>

CeleraPro Provides Administrative/Organizational Services that include:

- Clerical support, secretarial functions, receptionist services, organizational management, calendar management, document management, content and editing, word processing, transcription, mailing and coordination, scheduling, database management, organization and filing projects, order processing, newsletter creation and scheduling, mail drop and sorting, supply and stocking management, creation and maintenance of website content, scheduling meetings, preparing conference rooms, taking meeting minutes, handling visitor requests and maintaining supplies, supporting personnel and infrastructure needs.
- For GSA, our Administrative Support services include coordination and management of real property, preventive and predictive maintenance services, travel coordination and supporting personnel, database management, organization and filing projects, order processing, newsletter creation and scheduling, mail drop and sorting, creation and maintenance of website content, scheduling meetings, preparing conference rooms, taking meeting minutes, handling visitor requests and maintaining supplies.
- CeleraPro Administrative Support Services are provided services to organizations that include Internal Revenue Service (IRS), Federal Aviation Administration (FAA), Department of State (DOS), US Judicial Courts, National Real Estate Management (GSA), White House Services, Health and Human Services (HHS), Department of Energy (DOE), Department of Homeland Security (DHS), Department of Justice (DOJ), Bureau of Alcohol, Tobacco, Firearms and Explosives (ATF), GSA Regional Commissioner, Internal Revenue Service (IRS), Department of State (DOS), Department of Interior (DOI), Court of Appeals, and Environmental Protection Agency (EPA).



- ❑ At CeleraPro, we solve complex problems and foster methods to make big breakthroughs possible.
 - ✓ Our SMEs advance knowledge in their respective fields and look at problems in new ways.
 - ✓ We continuously re-examine our methods to stay on the cutting edge, and not succumb to standardization and bureaucratization that can slow down an organization.
 - ✓ We apply better solutions that meet new requirements, unarticulated needs, or existing market needs.
 - ✓ We find ways to get better at what we are already doing by improving existing capabilities.
 - ✓ We confront difficult problems by exploring unconventional methods and may use crowd sourcing to uncover unique approaches.
 - ✓ We apply brainstorming techniques to find clever ways to disrupt current technological approaches and develop new business models.
 - ✓ We continually examine raw scientific research to uncover new phenomenon that might be applied in a new way.
- ❑ CeleraPro applies the solution that best fits customer need.



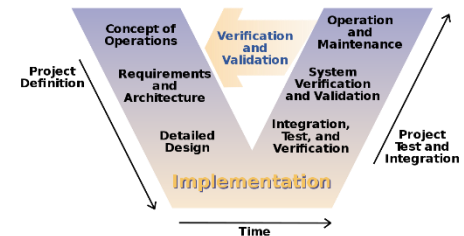
- ❑ CeleraPro PMs have supported the DoD CIO, the J6, DISA, USCYBERCOMMAND, and all four military branches with support to Cyber Security.
 - ✓ CeleraPro PMs have led Cyber teams supporting the J6 in handling compliance and cyber gaps for DoD and Joint service information systems.
 - ✓ CeleraPro PMs supported the DoD Enterprise-wide cybersecurity senior steering group in monitoring the DoD Cyber portfolio and managing the closure of cyber security gaps and developing requirements for closing them.
 - ✓ We have reviewed Host Based Security System (HBSS) functions and have experience with the Joint Capabilities Integration Development System (JCIDS), the DoD Information Network (DoDIN), and Computer Network Defense (CND).
- ❑ CeleraPro personnel have taken Cyber Warrior training classes which instructs on the details on offensive cyber warfare which provides insight on how to defend against offensive attacks.
- ❑ CeleraPro PMs provided SETA support to DNI IARPA programs including STONESOUP (Securely Taking On New Executable Software of Uncertain Provenance), which developed a mechanism for encapsulating suspicious software to prevent harm to an information system while still allowing it to execute.



- ❑ CeleraPro provides Cyber Security Assessments, Support to implementation of Commercial Cyber Security Products, Cyber Services, and Training.
- ❑ CeleraPro provides support to compliance with FISMA, NIST 800-171, NIST 800-53, DoDI 8500.01 "Cybersecurity" and DoDI 8530.01, and the RMF.
- ❑ CeleraPro delivers system assessment and authorization (A&A), development of cyber security policy and procedures, System security Plans (SSPs), Plans of Action and Milestones (POA&Ms), Standard Operating Procedures (SOPs), Security Assessment Plans (SAP), and Security Assessment Reports (SAR), and provides input (written or through eMASS) to the Risk Assessment Report (RAR) for each system evaluated.
- ❑ CeleraPro works with leading developers of Enterprise Security tools, such as Splunk, VMWare, FireEye, etc. to implement the right Cyber Solution for its customers.
- ❑ CeleraPro monitors NIST notices and participates in the review of evolving NIST Cyber Security standards. We have supported the evolution of Cyber Security Concepts of Operation (CONOPS) and provided cyber portfolio oversight, including the assessment of gaps in the DoD cyber portfolio.
- ❑ CeleraPro analyzes vulnerabilities to determine a remediation plan, and works closely with the A&A Personnel, Risk Managers, and system PM/SO/ISSMs to provide complete 100% accurate IV&V inspections.



- ❑ CeleraPro provides Systems Engineering (SE) to ensure that operational needs are linked to verifiable functional, performance, and interface requirements
- ❑ CeleraPro SE methodology assures delivery of high performance, scalable, stable, and resilient systems
- ❑ CeleraPro SE focuses on satisfying customer and stakeholder needs in a high quality, trustworthy, cost-efficient and schedule compliant manner throughout the system life cycle
- ❑ CeleraPro SE functions are performed in a parallel and iterative manner following a methodical, disciplined systems engineering approach for the design, realization, technical management, operations, and retirement of systems
- ❑ CeleraPro SE offerings cover:
 - ✓ Requirements Management and Needs Assessment
 - ✓ Perform market research and analysis of alternatives for meeting system requirements
 - ✓ Solution Engineering, Configuration Management, Risk Management, and Quality Management
 - ✓ Acquisition Support: Acquisition Strategy, Requirements Definition, Solicitation Formation and Issuance, Source Selection, Contract Award and Administration, PDR/CDR Evaluations
 - ✓ Solution analysis and selection of contractor proposals based on user requirements and budget
 - ✓ Monitor development and perform configuration management to control changes
 - ✓ Independent analysis of system functional and performance testing to validate designs against requirements, IV&V, Performance and Functional Testing, Integrate system into operations and support integration testing
 - ✓ Support transition to O&M
 - ✓ Perform configuration management control for design changes
 - ✓ Maintain cognizance of technology advancement and recommend improvements for operational efficiencies with next-generation technologies



- ❑ Help Desk and Service Desk
- ❑ Cloud Services: Infrastructure and Platform as a Service, Technology Planning
- ❑ Knowledge Management: Information Portals, Data Management
- ❑ IT Engineering: Strategy, Solution Engineering
- ❑ IT Portfolio Management, Technology Insertion, Technology Readiness Evaluations; Emerging Technologies
- ❑ Advanced Biometrics, Sensor engineering: CeleraPro personnel managed a biometrics program at the Agency, conducted biometric research, published biometric modality research documents, submitted a biometric patent application, and monitors technology advancements in the area of biometrics and biometric sensors.
- ❑ IT Service Management (ITSM): IT Infrastructure Library (ITIL), Full Cycle IT Service Delivery, Continuous Improvement



- ❑ CeleraPro achieves high quality performance through established business processes and project management processes built upon the foundation of the Project Management Institute's PMBOK.
 - ✓ Our management framework aligns to the PMBOK project management process groups.
 - ✓ CeleraPro establishes performance metrics in conjunction with the customer and continuously monitors program execution to ensure quality performance against the Quality Assurance Plan, which may include SLAs or AQLs.
 - ✓ By reducing or eliminating rework or corrections to completed tasks, we achieve more and significantly reduce disruption to end users.
 - ✓ This proactive approach ensures quality considerations are fully integrated into every step of the effort, to assist in meeting AQL, SLA, and QASP requirements.
 - ✓ CeleraPro delivers required documents and briefings in the format specified, and with the distribution and frequency defined by the PWS, or for call order deliverables, as specified by the call order.
 - ✓ CeleraPro assures the quality, timeliness, and accuracy of all deliverables using our Quality Assurance (QA) approach that includes the disciplined use of in-process reviews during the development of work products prior to their release.
- ❑ CeleraPro's disciplined QM / QA approach ensures that quality is built-in, not retrofit.



Technology Planning and Road-mapping

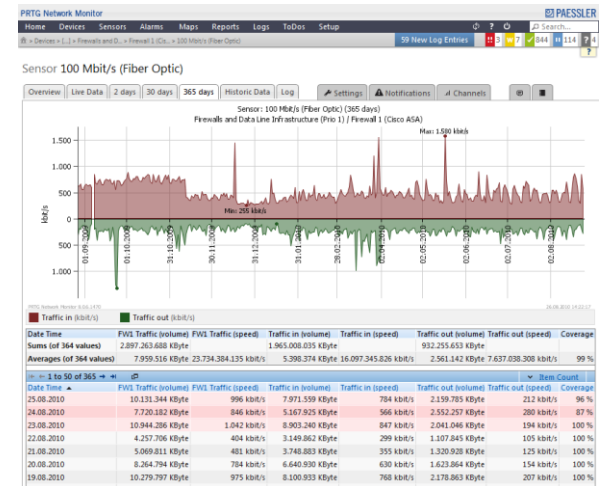
- ❑ CeleraPro has the technology planning experience to facilitate the development of short-term and long-term goals through the use of IT or other technology solutions, and builds a roadmap showing the path to achieve defined goals
 - ✓ The roadmap shows what is available today and the improvements that are scheduled over the next 35 years.
 - ✓ By understanding the technology available and its application, CeleraPro helps organizations determine where to invest financial resources to obtain the greatest return on investment.
 - ✓ CeleraPro links organizational goals to available system capabilities, and proposes a series of release plans, upgrades, and milestones, along with the requisite training, required resources, resulting opportunities, potential risks and mitigations, and keep the project on track by providing ongoing status reports.
- ❑ CeleraPro uses a planning approach that considers current technology capabilities and builds towards technology expectations and requirements of the future to ensure an efficient and effective transition.
 - ✓ With experience in both the public and private sector, our team navigates through the most challenging technology transition and insertion scenarios.
 - ✓ CeleraPro provides strategic technology refresh, transition, and insertion planning support to include preparation and development of milestone schedules, specific studies, fact-finding research, data analysis, and processes and procedures.
- ❑ CeleraPro Technology Planning expertise will:
 - ✓ Analyze program requirements, conduct trade studies, and develop candidate solutions
 - ✓ Identify relationships and dependencies with other program plans
 - ✓ Synchronize, sequence, and coordinate schedules and estimate costs
 - ✓ Perform technical reviews and audits
 - ✓ Prepare planning documentation such as a program Systems Engineering Plan (SEP)
 - ✓ Develop performance metrics to measure program status and implementation effectiveness
 - ✓ Analyze program schedule, cost, and performance risk and develop risk mitigation strategies
 - ✓ Interact with commercial industry to understand best practices and technology trends
 - ✓ Assess emerging technology maturity and plan the optimum timing for technology insertion



- ❑ CeleraPro uses a refined structured approach to systems integration that ensures that the delivered system meets the operational needs of the end-user.
 - ✓ System Integration verifies that all system components operate together as a correctly functioning whole in its intended environment. It is a key element of system implementation, which translates a design into a functional delivered system. Other aspects of implementation include installation, formal acceptance testing, and system initiation or transition/cut-over.
 - ✓ Integration activities typically begin in an Integration Test Bed and continue in the installation site.
 - ✓ CeleraPro's integration team will develop integration plans that define the technical and management processes and procedures to be used.
 - ✓ Integration typically starts with testing of individual subsystems, followed by the build-up of different threads or connected subsystems to test the various subsystem interfaces to validate the design.
 - ✓ After installation on-site, integration efforts continue to validate the correct assembly of the full system and all of the external interfaces.
 - ✓ At the completion of the system integration, the system will be turned over to the test team for dry running the formal test procedures.



- ❑ CeleraPro has experience with both automated and manual testing, examination, scanning, interviewing, and discovery techniques to verify compliance with system requirements or to identify security vulnerabilities.
 - ✓ We obtain requirements documents, specifications, or other artifacts for evidence, examination, and inspection before, during and after assessments.
 - ✓ For information systems, we conduct in-depth vulnerability assessments and asset information system auditing (e.g., servers, workstations, network appliances, storage devices, and applications), review security controls and configurations, and validate if security objectives and goals are met, and, where applicable, review compliance requirements and best practices.
 - ✓ CeleraPro can develop a Plan of Action and Milestone (POA&M) and vulnerability scan results/documentation, produce System Security Plans and Security Assessment Plans (SAPs) for government approval prior to the assessment, record findings during the assessment, and produce a Security Assessment Report (SAR).
 - ✓ CeleraPro tracks vulnerability releases (e.g. Information Assurance Vulnerability Management (IAVMs) and non-IAVMs) and research to determine exploitable vulnerabilities, Assesses compliance, effectiveness, or changed state of security controls protecting Information Systems such as the DoD Information Network (DoDIN)



History and Key Leadership



Our clientele personally believe in the expertise we provide, how we provide it, and the enormous benefits they receive from it.

-Dr. Remo Perini

Dr. Remo Perini - MBA, MSEE, PMP, Ph.D., President and Chief Innovation Officer

Dr. Perini stood-up CeleraPro originally in 2015 as a Business-to-Business consulting company, providing expertise to large and small firms in the areas of Proposal, Capture, and BD. After years of winning work for other companies, he decided to transform CeleraPro into a company built on a foundation of integrity with deep insight into customer needs, a culture focused on employee growth, and bringing innovative thinking to government customers across broad areas of technology. CeleraPro in its current form is poised to deliver expertise to US Government customers.

CeleraPro is a science, professional services, and technology-oriented business that converts client challenges into innovative and practical solutions. We apply technology, staffing, and management expertise in support of our Federal Government and DoD clients with solutions that include administrative support, cyber security, acquisition support, information technology, PMP-certified project and program management, strategic and pursuit planning, technology road mapping, Satellite and Terrestrial communications, Base Operations, Facilities Maintenance, Logistics, and interdisciplinary life cycle systems engineering.

CeleraPro focuses on technical, operational, organizational, and process related challenges, providing rapid solutions to our clients. We identify innovative methods that bring long-term, consistent benefits, improving efficiency and efficacy. We invest in our people and have cultivated an environment to attract and train highly experienced staff. We have the privilege of being well connected within the contractor community and leverage those relationships to provide the highest quality support to our customers through teaming and partnering. Our network of hundreds of subject matter experts (SMEs), technology partners, and process experts, provides CeleraPro with a catalogue of expertise we apply to exceed client requirements. Celera (Latin: Speed) and Pro (Professional) combine to meet the technology needs of our clients, quickly and efficiently.

CeleraPro services and solutions ultimately make our client's organizations, enterprises, and the world at large more secure, connected, and efficient.

Dr. Perini holds a PhD in Information Security and conducted ground breaking research in the development of a new biometric modality using the low voltage emanations of the human brain in response to security related stimuli. His research has been published and submitted to the United States Patent and Trademark Office (USPTO).